



UTMACH

FACULTAD DE CIENCIAS AGROPECUARIAS

CARRERA DE AGRONOMÍA

Delimitación de zonas de manejo del riego mediante imágenes satelitales y atributos físicos-químicos del suelo

**ZHIMINAICELA CABRERA JONATHAN BLADIMIR
INGENIERO AGRONOMO**

**MACHALA
2022**



UTMACH

FACULTAD DE CIENCIAS AGROPECUARIAS

CARRERA DE AGRONOMÍA

**Delimitación de zonas de manejo del riego mediante imágenes
satelitales y atributos físicos-químicos del suelo**

**ZHIMINAICELA CABRERA JONATHAN BLADIMIR
INGENIERO AGRONOMO**

**MACHALA
2022**



UTMACH

FACULTAD DE CIENCIAS AGROPECUARIAS

CARRERA DE AGRONOMÍA

ENSAYOS O ARTÍCULOS ACADÉMICOS

**Delimitación de zonas de manejo del riego mediante imágenes
satelitales y atributos físicos-químicos del suelo**

**ZHIMINAICELA CABRERA JONATHAN BLADIMIR
INGENIERO AGRONOMO**

VILLASEÑOR ORTIZ DIEGO RICARDO

**MACHALA
2022**



information@revistabionatura.com

Para: Jonathan Bladimir Zhiminaicela Cabrera



Mar 07/03/2023 13:20

Dear, thank you for sending your article, it will go to peer review, a process that sometimes is delayed by the disposition of the reviewers, the journal uses the peer review service of Publons, but if you wish, you can also suggest three possible reviewers specialized in the subject.

Dear, you must send the ICMJE form, which appears in :

<https://www.revistabionatura.com/submission.html>

Best regards

--

Ms. Evelyn Padilla

Publication assistant Bionatura

information@revistabionatura.com

www.revistabionatura.com

CLÁUSULA DE CESIÓN DE DERECHO DE PUBLICACIÓN EN EL REPOSITORIO DIGITAL INSTITUCIONAL

El que suscribe, ZHIMINAICELA CABRERA JONATHAN BLADIMIR, en calidad de autor del siguiente trabajo escrito titulado Delimitación de zonas de manejo del riego mediante imágenes satelitales y atributos físicos-químicos del suelo, otorga a la Universidad Técnica de Machala, de forma gratuita y no exclusiva, los derechos de reproducción, distribución y comunicación pública de la obra, que constituye un trabajo de autoría propia, sobre la cual tiene potestad para otorgar los derechos contenidos en esta licencia.

El autor declara que el contenido que se publicará es de carácter académico y se enmarca en las disposiciones definidas por la Universidad Técnica de Machala.

Se autoriza a transformar la obra, únicamente cuando sea necesario, y a realizar las adaptaciones pertinentes para permitir su preservación, distribución y publicación en el Repositorio Digital Institucional de la Universidad Técnica de Machala.

El autor como garante de la autoría de la obra y en relación a la misma, declara que la universidad se encuentra libre de todo tipo de responsabilidad sobre el contenido de la obra y que asume la responsabilidad frente a cualquier reclamo o demanda por parte de terceros de manera exclusiva.

Aceptando esta licencia, se cede a la Universidad Técnica de Machala el derecho exclusivo de archivar, reproducir, convertir, comunicar y/o distribuir la obra mundialmente en formato electrónico y digital a través de su Repositorio Digital Institucional, siempre y cuando no se lo haga para obtener beneficio económico.



ZHIMINAICELA CABRERA JONATHAN
BLADIMIR
0706983251

UNIVERSITAS
MAGISTRO-
RUM
ET SCHOLARIUM

Type of the Paper (Research).

Definition of irrigation management zones in banana cultivation using satellite images and physical and chemical soil attributes:

Jonathan Zhiminaicela-Cabrera ^{1,2}, Diego Villaseñor-Ortiz ^{1,2*}, Eduardo Tusa ², Angel Luna-Romero ^{1,2},

¹ Facultad de Ciencias Agropecuarias (FCA), Universidad Técnica de Machala (UTMACH), Machala, El Oro, Ecuador; jzhiminail@utmachala.edu.ec, ORCID <https://orcid.org/0000-0001-9462-9608>. dvillasenor@utmachala.edu.ec, <https://orcid.org/0000-0001-5646-4451>. aeluna@utmachala.edu.ec, <https://orcid.org/0000-0002-4311-9445>

² Facultad de Ingeniería Civil, UTMACH, AutoMathTIC, 070210 Machala, El Oro, Ecuador; etusa@utmachala.edu.ec, <https://orcid.org/0000-0002-9408-5134>

³ Semillero de Investigación en Fitotecnia (SINFIT), FCA, UTMACH, Machala, El Oro, Ecuador.

* Correspondence: dvillasenor@utmachala.edu.ec

DOI.

ABSTRACT

In large banana farms, irrigation is managed in a homogeneous way being inadequate because the soil is variable between zones causing significant losses in productivity. Therefore, the objective of the study was to delimit agricultural management zones (MZs), considering the spatial variability of physical and chemical soil attributes and information from spectral indices calculated from satellite image data and the soil-climate-plant relationship to increase the reliability of the information. Sentinel 2 images were processed, and spectral indices were calculated using the Sen2R software package and homogeneous zones were generated with QGIS Smart map. The satellite images allowed generating equal MZs between indices that varied from the MZs generated only with physical and chemical tributes, by means of a correlation matrix between the mean values of the physical and chemical variables and the spectral values, the water stress index was associated to the soil sand content, electrical conductivity, textural class and available water in the soil, as well as the vegetation spectral indices associated to the soil pH. The relationship is directly proportional to the water holding capacity of soil particles, as well as to the cation exchange and base assimilation of soil particles for pH.

Keywords: management units, spectral indices; Smart map; sen2r, Sentinel 2.

INTRODUCTION

The cultivation of bananas (*Musa* spp.) is a basic source of food worldwide (1), as well as an important agricultural export product for many tropical countries, including Ecuador, where its commercialization in the international market is one of the country's most significant economic activities (2) Annual banana production increases by an average of 1.37 tons per hectare (3), which is closely related to the increase in productivity, which is achieved through efficient, technician management that takes into account both the physiological needs of the crop and the soil and climatic conditions of the area in which it is grown (4).

A good agronomic management of crops can be achieved with the delimitation of agricultural management units or agricultural management zones (MZs), which allow the optimization of resources; economic,

social and environmental (5). The importance of a differentiated management is due to the variability of the physical and chemical attributes of the soil, but also to irrigation, since in the banana crop, if managed incorrectly, it can generate losses in fruit mass of up to 65% (4) or an increase in the incidence of insect pests and diseases, especially Black Sigatoka (*Mycosphaerella fijiensis* Morelet) (6) In the province of El Oro, a large part of the irrigation systems are controlled by a manual operator, who without specific guidance causes by omission water wastage and inaccuracy in irrigation control, affecting crop productivity (4,7).

As a measure to mitigate these errors, precision agriculture has facilitated the automation of several processes in irrigation management with which the costs for the execution of procedures are reduced, such as the delimitation of MZs with which the state of the vegetation and the variation present within a crop can be identified from spatial information obtained from satellite images, from which the yield or health of the vegetation can be estimated (8,9) This information can be associated to the water conditions of the crop with which the water management of the crop can be focused. Additionally, it is important to consider that the water needs must be in function of the soil, climate and plant relationship, which will allow to increase the efficiency of irrigation management (10,11).

With the delimitation of the MZs, the technicians responsible for field management can make correct decisions, considering the spatial variability of the physical and chemical attributes of the soil (12), which are related to different physical properties of the soil such as: porosity, bulk density, texture and structure that influence the water retention capacity and availability of water for the crop (13,14).

The literature reports delimitations of MZs using satellite images obtained from remote sensors as instruments to obtain information from an object at a distance in a manned or unmanned means of transport (17), have been contrasted with MZs generated from physical (16), chemical (17), hydric (18) and biological (19) properties, demonstrating their efficiency for the delimitation of MZs. The processing of remotely sensed information has been tested in several crops, including banana (20,21), allowing the identification of plants by means of aerial imagery and machine learning methods and the identification of vegetation health. Precision agriculture and spectral indices obtained from satellite images make it possible to identify areas with lower productivity on a farm or to estimate crop yields using the normalized difference vegetation index (NDVI), the soil-adjusted vegetation index (SAVI) (22,23) to estimate soil moisture at field capacity and permanent wilting point using the water stress index (MSI) (24).

With the considerations described above, the general objective of this research is delimiting agricultural management zones (MZs), considering the spatial variability of soil physical and chemical attributes and the information of spectral indices calculated from satellite image data and the soil-climate-plant relationship to increase the reliability of the information.

MATERIALS AND METHODS

Study area

To define the irrigation management zones for banana cultivation, we worked with information from a banana farm in the coastal region of Ecuador located in the province of El Oro, Machala canton, farm "Las Mercedes" of the company PACIDEL S.A. with a surface area of 75 hectares, located at the geographic coordinates 3°15'59. 1 "S 79°53'43.2 "W the farm has the delimitation of productive lots according to the characteristics of the soil of variable texture which are mentioned in (Figure 1.), the period in which the study was developed was between the months of May to July 2022.

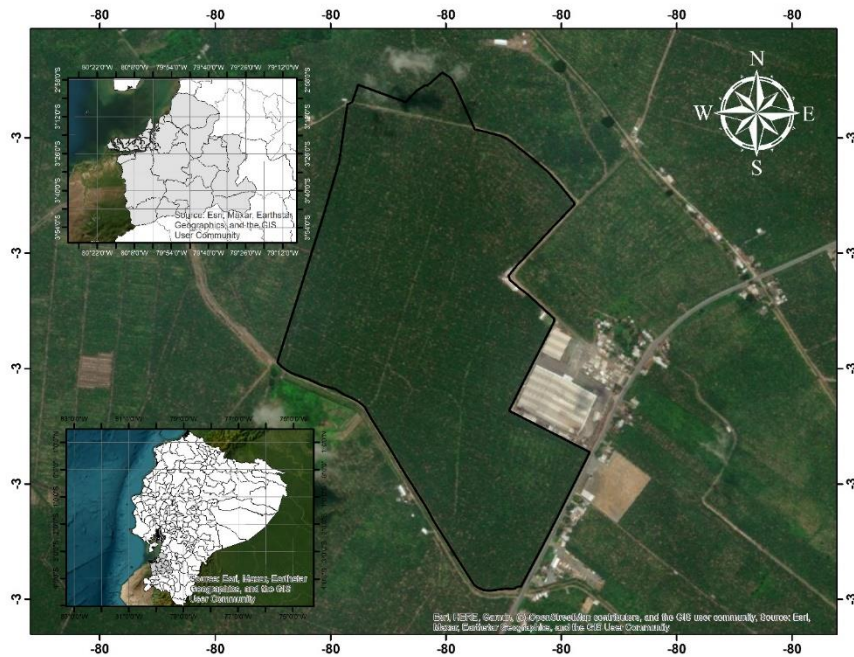


Figure 1. Spatial location of the study area.

Satellite image processing

The images used were obtained through the Copernicus programmed of the European Space Agency, in Geo TIFF format (Level 1) and downloaded using the `sen2r` package in R version 4.2.2. The images were processed with the `Sen2Cor` package for the correction of the orthorectified level 2A images with reflectance levels below atmospheric (BOA). Images with reflectance levels above atmospheric (TOA) of levels 1C were not used in order to process information with better resolution, contrast and structure (25). Our images were selected using a KLM and the EarthExplorer interface, and a Shapefile was included to delimit the farm in the download. For image processing, the image was cropped with a mask layer on the farm and the resolution between bands was adjusted to 10 meters. Normalized land cover index (NDVI), normalized difference adjusted index (SAVI) and MSI water stress index (26) were selected using the following equations:

$$NDVI = \frac{(NIR - RED)}{(NIR + RED)}$$

where: NDVI is the Normalized Difference Vegetation Index; NIR the near-near infrared region; RED the red region. In Sentinel 2 the NIR corresponds to band 8 (spectral resolution of 0.78 - 0.90 μm) and RED to band 4 (spectral resolution of 0.65 - 0.68 μm).

The Soil Adjusted Vegetation Index (SAVI) has a slight variation of the traditional NDVI formula to avoid distortions in the analysis values when vegetation is located on exposed soils (27). Conditions such as temperature or humidity can influence the working bands analyzed and thus the results provided by the indicator. In this case, the SAVI vegetation index will try to avoid this influence of the soil on the results by adding an additional factor (L) in the NDVI equation that will allow working in scenarios where vegetation development is incipient.

$$SAVI = \frac{(NIR - RED)}{(NIR + RED + L)} * (1 + L)$$

Water Stress Index (MSI) for canopy water deficit analysis, productivity prediction and biophysical modelling (24). The interpretation of the MSI is reversed relative to other aquatic vegetation indices; thus, higher values of the index indicate higher plant water stress and, in inference, lower soil moisture content. Values of this index range from 0 to more than 3, with the common range for green vegetation being 0.2 to 2.

$$MSI = MidIR / NIR$$

To avoid errors due to overlapping satellite images in the study area, spectral index data were filtered for each situation assessed. Values in a 10 m band around the perimeter of the area and the areas where fruit processing and housing takes place, especially at the edges of the area that were close to other plantations, were excluded. This procedure allowed for the normalization of NDVI and SAVI data, as well as productivity data, and allowed for an accurate comparison between these parameters. This methodology was used to ensure the accuracy and reliability of the results(28).

Delimitation of management zones using satellite images

To define the management zones, a combination of three spectral indices (NDVI, SAVI and MSI) obtained from the average of four nearby satellite images was used. The average values of each index were processed using the Smart-map plug-in of QGIS version 3.22.11 (29). First, data including the coordinates extracted from the image and the index values were loaded. Then, the management zones window was reviewed, the data were interpolated, and the number of classes generated was identified. In this case, three zones with several iterations equal to 500 were adjusted according to the FPI and NCE values. This methodology was applied following the methodology described in the document (30)

Delimitation of Management Zones by physical-chemical properties

The management zones were determined using the soil characteristics provided by the company PACIDEL S.A. For this purpose, the farm was delimited by means of a planimetric survey and sampling points were generated within each hectare. ArcGIS image processing tools, including kriging-based interpolation models and Voronoi polygon division, were used to create the management zones (31).

Soil characteristics and adjustment of water requirements

To determine the irrigation needs of the banana crop, the CROPWAT software was used, based on the crop requirements (30). These calculations were carried out to compare previous water applications, as well as to adjust them according to the climatology of the area and the physical and chemical properties of the soil. To gather information on climatology, the meteorological yearbooks of the nearest meteorological station of the National Institute of Meteorology and Hydrology (INAMHI), with station code M0292 (32) were consulted (Table 1). This station is located at an altitude of 5 m above sea level, at latitude 3.17°S and longitude 79.54°W.

Table 1. Climatology of the study area station M0292. T °C (Temperature), RH (Relative Humidity), VW (Wind Speed), Evap (Evaporation), PP (Precipitation), H (Heliophany).

Months	T (°C)	HR (%)	VW (km h ⁻¹)	Evap (mm mes ⁻¹)	PP (mm mes ⁻¹)	H (h día ⁻¹)	PP (mm día ⁻¹)
January	26,83	80,05	1,19	112,55	102,67	3,32	3,31
February	27,06	79,95	1,19	107,94	164,80	3,55	5,89
March	27,34	79,05	1,26	124,42	130,85	4,45	4,22
April	28,69	79,33	1,25	123,57	85,33	4,49	2,84
May	26,63	81,33	1,13	97,43	28,75	3,57	0,93
June	25,19	85,00	1,08	75,57	14,36	2,34	0,48
July	24,33	85,14	1,02	73,94	10,41	2,31	0,34
August	23,60	86,14	1,06	71,18	13,27	2,08	0,43
September	23,95	86,32	1,07	71,39	11,46	1,60	0,38
October	23,94	85,70	1,78	65,36	16,70	1,08	0,54
November	24,47	84,70	1,14	71,91	76,63	1,49	2,55
December	25,89	81,05	1,19	98,43	39,50	2,64	1,27

As for the calculation of the effective precipitation of the crop using the FAO/AGLW method, where the effective precipitation is calculated by the formula $0.6 * P - 10/3$ when the monthly precipitation is less than or

equal to 70/3 mm and varies from 0.6 to 0.8*P-24/3 when the monthly precipitation is greater than 70/3 mm implemented in the same CROPWAT software (33) the irrigation programming in the characteristics of the crop was carried out using the data obtained from the FAO manual 56 (34) due to the fact that it is a perennial crop the irrigation programming of the crop was carried out by calculating the phase of the crop at 365 days, Kc (crop coefficient) of the crop 1.10 root depth of the crop of 0.70 m, critical exhaustion level 0.65, yield response 1.35 and crop height of 3 m, because the soil characteristics are variants on the farm was determined to perform the calculations of the sheet time and frequency of irrigation through the Excel software package Office, based on this background is performed pro-average calculation of irrigation needs per month.

Table 2. Water requirements as a function of climatic conditions in the study area M0292. Kc (crop coefficient), ETc (crop evapotranspiration), Pref. effect (effective precipitation), Req.irrigation (irrigation requirement).

Moths	Stage	Kc	ETc mm día ⁻¹	ETc mm dec ⁻¹	Prec. efec mm dec ⁻¹	Req.Riego mm dec ⁻¹	Req.Riego mm día ⁻¹
January	Start	1,1	3,2	33,5	19,4	14,1	1,4
February	Start	1,1	3,4	32,1	36,0	0,3	0,0
March	Start	1,1	3,7	38,0	26,9	11,1	1,1
April	development	1,1	3,5	35,2	14,7	20,6	2,1
May	development	1,1	2,8	29,1	2,5	26,6	2,7
June	development	1,1	2,2	22,1	0,0	22,1	2,2
July	development mediation	1,1	2,1	21,4	0,0	21,4	2,1
August	development mediation	1,1	2,1	21,9	0,0	21,9	2,2
September	development mediation	1,1	2,1	21,4	0,0	21,4	2,1
October	Finish	1,1	2,1	21,7	0,1	21,6	2,2
November	Finish	1,1	2,2	21,7	12,5	9,2	0,9
December	Finish	1,1	2,4	25,0	4,7	20,3	2,0

Based on all these antecedents and mathematical modelling and the USDA Soil Water Characteristics (35) the needs for which irrigation time maps were obtained adjusted to daily irrigations and time intervals between 30 - 50 minutes depending on the texture every 3 days for which 15% more or less of the interval obtained was adjusted so that the irrigation management in situ is easy to use for the operators and to avoid making manual mistakes. Additionally, the adjustment of the irrigation time by textural class is taken into consideration, to better understand and manage irrigation.

Statistical analysis and comparison of the results

Before comparing the results, outliers were manually removed from the attribute table in each index by generating raster histograms, due to the influence of roads, key roads and constructions within the banana plantations. To identify the correlation between the chemical physical variables of the soil with the values determined in the spectral indices, by means of the Voronoi maps in the ARCGIS software(36,37) of the most important properties for irrigation issues, the data will be extracted by polygons obtained especially on the textural class and from these to know what is the relationship between the data obtained from the satellite images, The raster images were cut and the values were extracted for each site in order to locate an average value for each zone as well as for the physical and chemical conditions of the soil, and correlation was carried out using the R software packages corrplot, tidyverse and their complements. Additionally, to verify the reported values of the MSI, the maps were compared with the values of the volumetric moisture content by means of the TRD 350 probe of Spectrum Technologie s.Inf (38) and related it to the water retention capacity of the soil.

RESULTS

Once the average raster files for each index were elaborated, the image was cut and the values of each pixel were converted to points and processed in Smart-map and the outliers, extremes or outliers were eliminated (29), because the outliers were previously eliminated, the distribution of the data in an exponential manner was maintained, for each index giving a representation of the outliers produced by the constructions eliminated from the zoning.

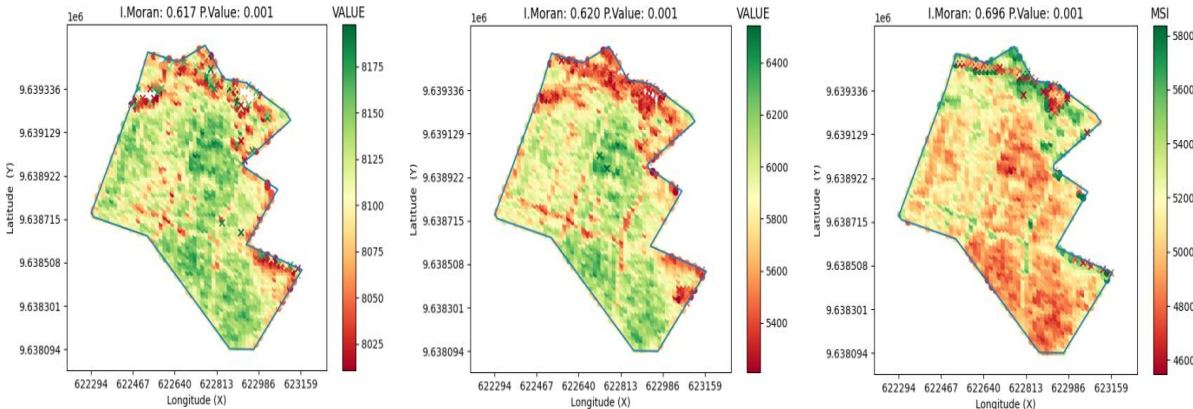


Figure 2. Removing outliers and cutting the extension of the farm "Las Mercedes". From left to right the NDVI, SAVI and MSI index showing the outliers to be removed.

Prior to data cleaning the data were interpolated and the semivariance model was fitted to the exponential model in order to generalize the isotropic variogram (Figure 3.), the R2 values were adjusted to 0.91 for the NDVI, 0.81 for the SAVI index and finally 0.87 for the MSI, the data were homogeneously fitted with a good correlation coefficient to be able to process the data between the spectral indices (29).

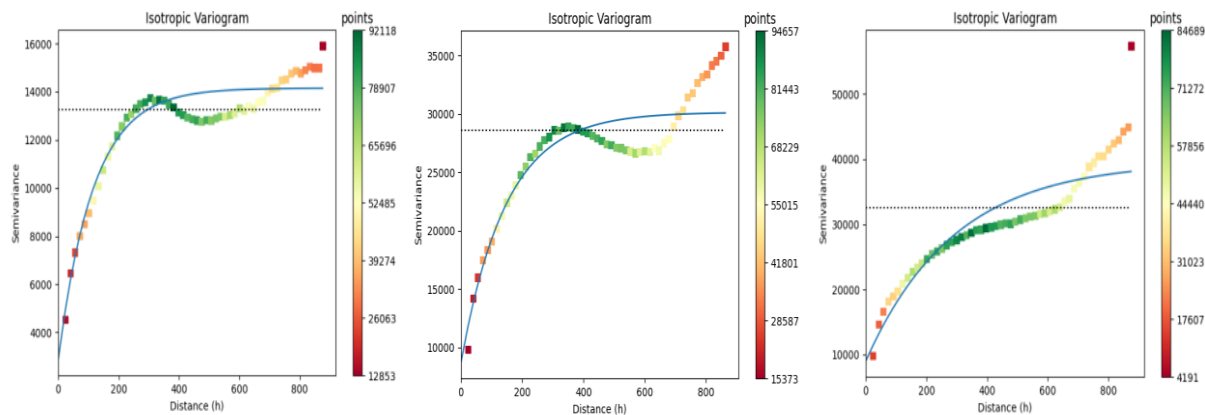


Figure 3. Distribution of the isotropic variograms with the distances h and the distribution of the exponential variance. From left to right the NDVI, SAVI and MSI index showing the outliers to be suppressed.

Based on the models to generate the number of classes for NDVI, SAVI and MSI were grouped and intercepted into 3 classes, these results were the same when generating the management zones by the physical chemical attributes of the soil in which the K-means test found the grouping for 3 clusters with each other (Figure 4.). The spectral indices allowed estimation of the health of the vegetation (26), especially in relation to the hydric conditions of the crop.

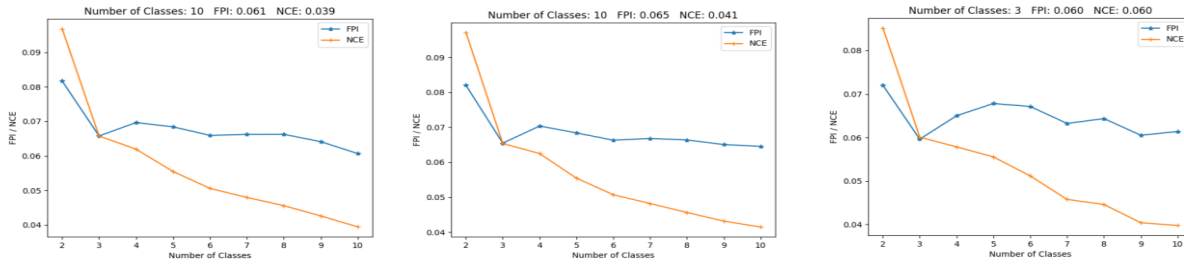


Figure 4. Number of classes or groups generated in each spectral index. From left to right the NDVI, SAVI and MSI indexes showing the outliers to be suppressed.

Finally, generated the group number and with interactions adjusted to 500 between them, homogeneous zones were generated to the zones generated by the same kriging interpolation model from variables and spectral information obtained from Sentinel 2 satellite images, the variations between spectral indices were not variants between them, but they were significantly related to the management zones (Figure 5). The spectral indices associated with vegetation health allowed the generation of management zones (28) contrasted with the results currently obtained, with NDVI and SAVI being the most closely related, varying from the zones obtained from the physical and chemical soil conditions.

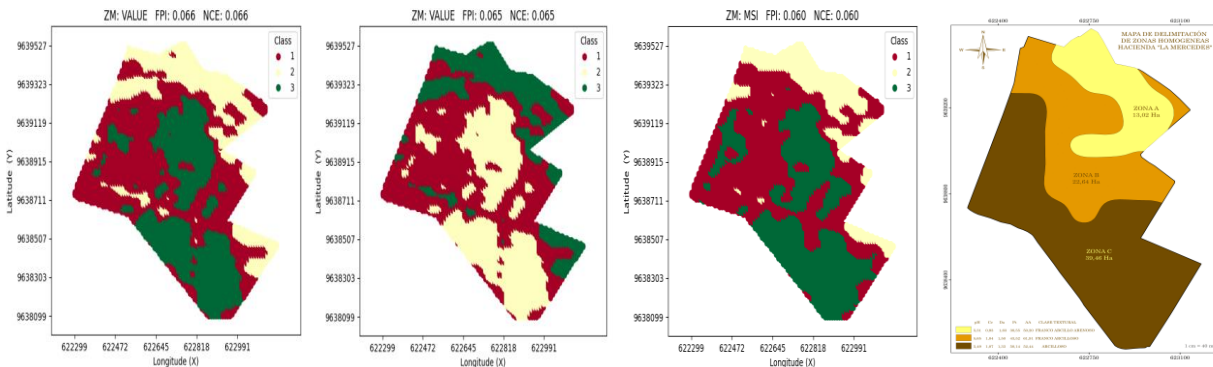


Figure 5. Agronomic management zones generated from spectral indices and soil physical and chemical properties.

An overview of the physical and chemical parameters of the soil were better associated with the spectral indices than with the management zones generated from the physical and chemical properties of the soil. This can be verified with the retention capacity from the spatial behavior of the usable water in the 60 cm and with the textural class of the soil as well as with the water stress index; on-site visits to the farms contrasted the assumptions reviewed, as the areas of greater water stress had greater water infiltration (Figure 6).

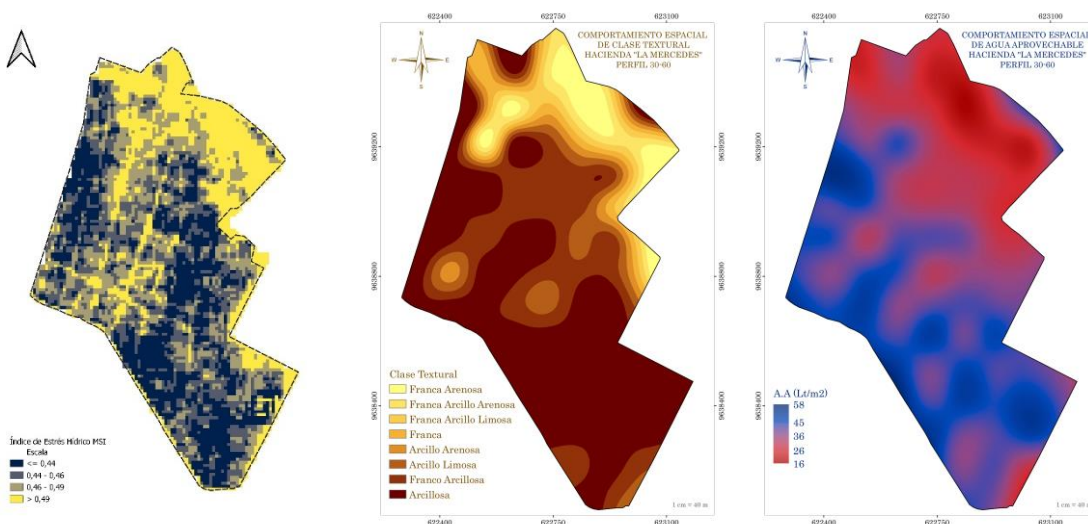


Figure 6 Soil physical properties associated with agricultural management zones. From left to right water stress index (MSI), soil textural class, usable water in the soil.

Based on these management zones, better irrigation scheduling can be made by adjusting the level of depletion based on crop textural classes in order to allow for efficient crop management adjusted to daily irrigations. However, once the adjustments were made and applied within the farm, it was complicated to manage irrigation due to the process involved for the irrigators of the farms to be able to move between valves to open the irrigation modules (Figure 7), so it would be convenient to automate the opening of the valves according to a module opening design that helps to reduce water consumption (7).

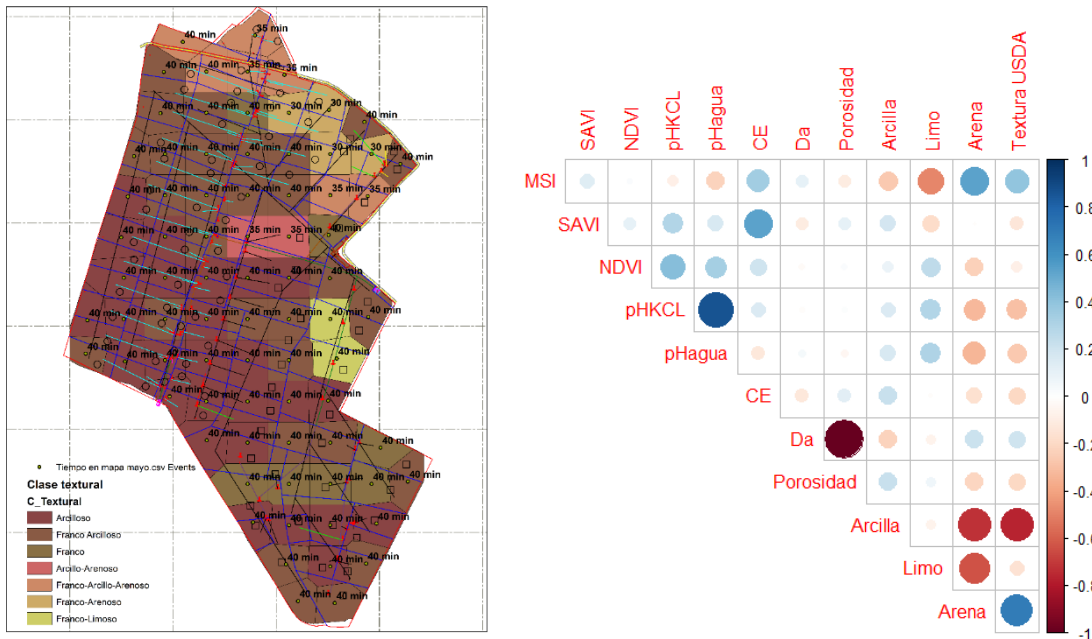


Figure 7. Irrigation scheduling as a function of soil adjusted to management zones and correlation matrix.

The values were positively associated with the water stress index, because the higher the water stress the higher the sand content in the study area or site, while the clay content decreases with which the soil conditions can be related especially to the water retention capacity of the soil particles, as well as the EC conditions which will influence the productivity of the zones(39), while the NDVI and SAVI spectral indices were better associated with the EC of the soil and the pH.

CONCLUSIONS

The management zones generated from the NDVI, SAVI and MSI spectral indices by processing information from satellite images allowed the description of three management zones generated by comparing the j-means model with the management zones created by the physical and chemical properties of the soil. However, these were more associated with the water assimilation capacity and physical properties obtained at 60 cm depth, specifically with the textural class.

The spatial behavior of water use obtained with the TDR 350 probe resembled better with the zones generated from satellite images than with the physical and chemical properties of the soil. The management zones and the physical characteristics of the soil associated with the irrigation requirements could not be managed correctly due to the difficulty in programming the irrigation modules manually, so it is recommended that this process be automated to manage irrigation more efficiently and reduce water consumption.

Acknowledgments: The authors would like to thank all the members of the "GRUPO EMPRESARIAL SÁNCHEZ" for their contributions for the collection of information and the use of physical and chemical analyses provided by the company PACIDEL S.A., as well as the Technical University of Machala for the use of equipment for the development of the research.

Conflicts of Interest: The funders had no role in the design of the study; in the collection, analyses, or interpretation of data; in the writing of the manuscript, or in the decision to publish the results.

REFERENCES

1. Ghag SB, Ganapathi TR. Genetically modified bananas: To mitigate food security concerns. *Sci Hortic* [Internet]. 2017 Jan;214:91–8. Available from: <https://linkinghub.elsevier.com/retrieve/pii/S0304423816305829>
2. Evans EA, Ballen FH, Siddiq M. Banana Production, Global Trade, Consumption Trends, Postharvest Handling, and Processing. In: *Handbook of Banana Production, Postharvest Science, Processing Technology, and Nutrition* [Internet]. Wiley; 2020. p. 1–18. Available from: <https://onlinelibrary.wiley.com/doi/10.1002/9781119528265.ch1>
3. Varma V, Bebbler DP. Climate change impacts on banana yields around the world. *Nat Clim Chang* [Internet]. 2019 Oct 2;9(10):752–7. Available from: <http://www.nature.com/articles/s41558-019-0559-9>
4. Panigrahi N, Thompson AJ, Zobelzu S, Knox JW. Identifying opportunities to improve management of water stress in banana production. *Sci Hortic* [Internet]. 2021 Jan;276:109735. Available from: <https://linkinghub.elsevier.com/retrieve/pii/S030442382030563X>
5. Song X, Wang J, Huang W, Liu L, Yan G, Pu R. The delineation of agricultural management zones with high resolution remotely sensed data. *Precis Agric* [Internet]. 2009 Dec 11;10(6):471–87. Available from: <http://link.springer.com/10.1007/s11119-009-9108-2>
6. Yonow T, Ramirez-Villegas J, Abadie C, Darnell RE, Ota N, Kriticos DJ. Black Sigatoka in bananas: Ecoclimatic suitability and disease pressure assessments. Papadopoulos NT, editor. *PLoS One* [Internet]. 2019 Aug 14;14(8):e0220601. Available from: <https://dx.plos.org/10.1371/journal.pone.0220601>
7. Berrú-Ayala J, Hernandez-Rojas D, Morocho-Díaz P, Novillo-Vicuña J, Mazon-Olivo B, Pan A. SCADA System Based on IoT for Intelligent Control of Banana Crop Irrigation. In 2020. p. 243–56. Available from: http://link.springer.com/10.1007/978-3-030-42517-3_19
8. HARRIS A, BRYANT R, BAIRD A. Detecting near-surface moisture stress in spp. *Remote Sens Environ* [Internet]. 2005 Aug 15;97(3):371–81. Available from: <https://linkinghub.elsevier.com/retrieve/pii/S0034425705001628>
9. Kureel N, Sarup J, Matin S, Goswami S, Kureel K. Modelling vegetation health and stress using hyperspectral remote sensing data. *Model Earth Syst Environ* [Internet]. 2022 Mar 8;8(1):733–48. Available from: <https://link.springer.com/10.1007/s40808-021-01113-8>
10. Blum A. Plant Water Relations, Plant Stress and Plant Production. In: *Plant Breeding for Water-Limited Environments* [Internet]. New York, NY: Springer New York; 2011. p. 11–52. Available from: http://link.springer.com/10.1007/978-1-4419-7491-4_2
11. Zinkernagel J, Maestre-Valero JoseF, Seresti SY, Intrigliolo DS. New technologies and practical approaches to improve irrigation management of open field vegetable crops. *Agric Water Manag* [Internet]. 2020 Dec;242:106404. Available from: <https://linkinghub.elsevier.com/retrieve/pii/S0378377420302316>
12. Villegas Santa L, Castañeda Sánchez DA. Multivariate analysis to model yield variability for defined management zones in a banana agroecosystem. *Dyna (Medellin)* [Internet]. 2020 Jul 1;87(214):165–72. Available from: <https://revistas.unal.edu.co/index.php/dyna/article/view/84827>
13. Coelho EF, Santos MR dos, Donato SLR, Cruz JL, Oliveira PM de, Castricini A. Soil-water-plant relationship and fruit yield under partial root-zone drying irrigation on banana crop. *Sci Agric* [Internet]. 2019 Oct;76(5):362–7. Available from: http://www.scielo.br/scielo.php?script=sci_arttext&pid=S0103-90162019001500362&tlng=en
14. Ding Z, Kheir AMS, Ali MGM, Ali OAM, Abdelaal AIN, Lin X, et al. The integrated effect of salinity, organic amendments, phosphorus fertilizers, and deficit irrigation on soil properties, phosphorus

- fractionation and wheat productivity. *Sci Rep* [Internet]. 2020 Dec 17;10(1):2736. Available from: <http://www.nature.com/articles/s41598-020-59650-8>
15. MIAO Y, MULLA DJ, ROBERT PC. An integrated approach to site-specific management zone delineation. *Front Agric Sci Eng* [Internet]. 2018; Available from: <http://journal.hep.com.cn/fase/EN/10.15302/J-FASE-2018230>
 16. Igor B, Leon Josip T, Paulo P. Agriculture Management Impacts on Soil Properties and Hydrological Response in Istria (Croatia). *Agronomy* [Internet]. 2020 Feb 16;10(2):282. Available from: <https://www.mdpi.com/2073-4395/10/2/282>
 17. Ayele GT, Demissie SS, Jemberrie MA, Jeong J, Hamilton DP. Terrain Effects on the Spatial Variability of Soil Physical and Chemical Properties. *Soil Syst* [Internet]. 2019 Dec 20;4(1):1. Available from: <https://www.mdpi.com/2571-8789/4/1/1>
 18. Priori S, Pellegrini S, Vignozzi N, Costantini EAC. Soil Physical-Hydrological Degradation in the Root-Zone of Tree Crops: Problems and Solutions. *Agronomy* [Internet]. 2020 Dec 31;11(1):68. Available from: <https://www.mdpi.com/2073-4395/11/1/68>
 19. Priori S, Barbetti R, Meini L, Morelli A, Zampolli A, D'Avino L. Towards Economic Land Evaluation at the Farm Scale Based on Soil Physical-Hydrological Features and Ecosystem Services. *Water (Basel)* [Internet]. 2019 Jul 24;11(8):1527. Available from: <https://www.mdpi.com/2073-4441/11/8/1527>
 20. Gomez Selvaraj M, Vergara A, Montenegro F, Alonso Ruiz H, Safari N, Raymaekers D, et al. Detection of banana plants and their major diseases through aerial images and machine learning methods: A case study in DR Congo and Republic of Benin. *ISPRS Journal of Photogrammetry and Remote Sensing* [Internet]. 2020 Nov;169:110–24. Available from: <https://linkinghub.elsevier.com/retrieve/pii/S0924271620302410>
 21. Wikantika K, Ghazali MF, Dwivany FM, Novianti C, Yayusman LF, Sutanto A. Integrated Studies of Banana on Remote Sensing, Biogeography, and Biodiversity: An Indonesian Perspective. *Diversity (Basel)* [Internet]. 2022 Apr 7;14(4):277. Available from: <https://www.mdpi.com/1424-2818/14/4/277>
 22. Chlingaryan A, Sukkarieh S, Whelan B. Machine learning approaches for crop yield prediction and nitrogen status estimation in precision agriculture: A review. *Comput Electron Agric* [Internet]. 2018 Aug;151:61–9. Available from: <https://linkinghub.elsevier.com/retrieve/pii/S0168169917314710>
 23. El-Hendawy S, Al-Suhaibani N, Elsayed S, Refay Y, Alotaibi M, Dewir YH, et al. Combining biophysical parameters, spectral indices and multivariate hyperspectral models for estimating yield and water productivity of spring wheat across different agronomic practices. *Chemura A*, editor. *PLoS One* [Internet]. 2019 Mar 6;14(3):e0212294. Available from: <https://dx.plos.org/10.1371/journal.pone.0212294>
 24. Welikhe P, Quansah JE, Fall S, McElhenney W. Estimation of Soil Moisture Percentage Using LANDSAT-based Moisture Stress Index. *Journal of Remote Sensing & GIS* [Internet]. 2017;06(02). Available from: <https://www.omicsgroup.org/journals/estimation-of-soil-moisture-percentage-using-landsatbased-moisturestress-index-2469-4134-1000200.php?aid=90942>
 25. Ranghetti L, Boschetti M, Nutini F, Busetto L. “sen2r”: An R toolbox for automatically downloading and preprocessing Sentinel-2 satellite data. *Comput Geosci* [Internet]. 2020 Jun;139:104473. Available from: <https://linkinghub.elsevier.com/retrieve/pii/S0098300419304893>
 26. Cohen S, Cohen Y, Alchanatis V, Levi O. Combining spectral and spatial information from aerial hyperspectral images for delineating homogenous management zones. *Biosyst Eng*. 2013 Apr;114(4):435–43.
 27. Rhyma PP, Norizah K, Hamdan O, Faridah-Hanum I, Zulfa AW. Integration of normalised different vegetation index and Soil-Adjusted Vegetation Index for mangrove vegetation delineation. *Remote Sens Appl* [Internet]. 2020 Jan;17:100280. Available from: <https://linkinghub.elsevier.com/retrieve/pii/S2352938519301661>
 28. Damian JM, Pias OH de C, Cherubin MR, Fonseca AZ da, Fornari EZ, Santi AL. Applying the NDVI from satellite images in delimiting management zones for annual crops. *Sci Agric* [Internet]. 2020;77(1). Available from: http://www.scielo.br/scielo.php?script=sci_arttext&pid=S0103-90162020000100101&tlng=en
 29. Pereira GW, Valente DSM, Queiroz DM de, Coelho AL de F, Costa MM, Grift T. Smart-Map: An Open-Source QGIS Plugin for Digital Mapping Using Machine Learning Techniques and Ordinary Kriging. *Agronomy*. 2022 Jun 1;12(6):1350.
 30. Balafoutis AT, Beck B, Fountas S, Tsiropoulos Z, Vangeyte J, van der Wal T, et al. Smart Farming Technologies – Description, Taxonomy and Economic Impact. In 2017. p. 21–77.

31. Villaseñor D, Cobos JD, Cruz A, Rivera W, Mendoza MJ, Miranda K. Estudio de suelos con fines de generación de Unidades de Gerenciamiento Agronómico. In: Día mundial del Suelo. Machala: UTMACH ; 2021.
32. Luna-Romero A, Ramírez I, Sánchez C, Conde J, Agurto L, Villaseñor D. Spatio-temporal distribution of precipitation in the Jubones river basin, Ecuador: 1975-2013. *Scientia Agropecuaria* [Internet]. 2018 Mar 28;9(1):63–70. Available from: <http://revistas.unitru.edu.pe/index.php/scientiaagrop/article/view/1734>
33. Villazón Gómez JA, Noris Noris P, Martín Gutiérrez G. Determinación de la precipitación efectiva en áreas agropecuarias de la provincia de Holguín. *Idesia (Arica)* [Internet]. 2021 Jun;39(2):85–90. Available from: http://www.scielo.cl/scielo.php?script=sci_arttext&pid=S0718-34292021000200085&lng=en&nrm=iso&tlng=en
34. Valle Júnior LCG do, Vourlitis GL, Curado LFA, Palácios R da S, Nogueira J de S, Lobo F de A, et al. Evaluation of FAO-56 Procedures for Estimating Reference Evapotranspiration Using Missing Climatic Data for a Brazilian Tropical Savanna. *Water (Basel)*. 2021 Jun 26;13(13):1763.
35. Saxton KE, Rawls WJ. Soil Water Characteristic Estimates by Texture and Organic Matter for Hydrologic Solutions. *Soil Science Society of America Journal*. 2006 Sep;70(5):1569–78.
36. Song T, Cui X, Yu G. A general vector-based algorithm to generate weighted Voronoi diagrams based on ArcGIS Engine. In: 2015 IEEE International Conference on Mechatronics and Automation (ICMA) [Internet]. IEEE; 2015. p. 941–6. Available from: <https://ieeexplore.ieee.org/document/7237612/>
37. Tian S. Vector-Based Realisation of Geographical Voronoi Treemaps With the ArcGIS Engine. *Journal of Information Technology Research* [Internet]. 2021 Jan 1;14(1):37–54. Available from: <https://services.igi-global.com/resolvedoi/resolve.aspx?doi=10.4018/JITR.2021010103>
38. Adla S, Rai NK, Karumanchi SH, Tripathi S, Disse M, Pande S. Laboratory Calibration and Performance Evaluation of Low-Cost Capacitive and Very Low-Cost Resistive Soil Moisture Sensors. *Sensors* [Internet]. 2020 Jan 8;20(2):363. Available from: <https://www.mdpi.com/1424-8220/20/2/363>
39. Verheijen FGA, Zhuravel A, Silva FC, Amaro A, Ben-Hur M, Keizer JJ. The influence of biochar particle size and concentration on bulk density and maximum water holding capacity of sandy vs sandy loam soil in a column experiment. *Geoderma*. 2019 Aug;347:194–202.

Citation: Lastname, F.; Lastname, F.; Lastname, F. Title.

Received: date

Accepted: date

Published: date

Publisher's Note: Bionatura stays neutral concerning jurisdictional claims in published maps and institutional affiliations.



Copyright: © 2022 by the authors. Submitted for possible open-access publication under the terms and conditions of the Creative Commons Attribution (CC BY) license (<https://creativecommons.org/licenses/by/4.0/>).